



Award winning team: (From left) Jennifer Mangan, Paula Lourie, Angela Schipper, Colin Milne, Dianne Hartwell, Rosanna Luoni, Jane Burnett, Ariana Donaghy and Cath Battersby, Barbara Ryan and Meredith Ross (absent).

## International accolade for Science Learning Hub



The University of Waikato's Science Learning Hub (SLH) is one of five winners in the e-learning and science category competing at the World Summit Awards (WSA). It is one of only two of the original eight New Zealand entries to have made it this far in the competition.

More than 40 winners have been selected from 461 submissions and now have a chance to win the overall World Summit Award for 2013. The 40 WSA winners will be invited to present their projects at the WSA Global Congress 2013 in Sri Lanka in October.

Products entered in the WSA were tested between 29-31 August in Estonia, and SLH was selected as one of the 40 best ICT ventures by the WSA Grand Jury. The jury, 17 IT-professionals, was made up of e-content experts from all continents with diverse backgrounds such as industry leaders, researchers, social entrepreneurs and journalists.

Each of the 461 ventures that made it to the Grand Jury had already won a national World Summit Award in its home country in one of the eight categories

of the WSA. The jury commented that the SLH's richness, high quality content, and smooth design were "behind the success of this wonderful educative and learning portal".

The jury evaluation went on to say that although the SLH is designed for New Zealanders, it is very useful for all countries as a good scientific reference.

"The portal explains and showcases New Zealand's cutting-edge science sector, providing teachers and their students with a contemporary and engaging view of science research, supporting identified needs in science education. The portal includes many featured collections such as classroom-ready resources, multimedia collections, teaching strategies and starter ideas, plus shot-on-location videos, interactive content and subject matter-based timelines. The portal is also showcasing New Zealand science and innovation to the world and demonstrating how this sector is contributing to local and global science."

*next page >>*



Dean:  
Professor  
Roger  
Moltzen

Kia ora tātou,

First, I would like to acknowledge the successes of all our students and staff who have recently received awards or completed their studies. We celebrate their achievements.

Creating international connectedness is a strategic vision of the University of Waikato. The Faculty is committed to this vision and supports the idea that best practice, knowledge and research should be shared.

In this edition of Edline you can read how Waikato staff and students are establishing international connections. For example, this month a Waikato team met with academics in Sweden to share their research about educational transitions. We also hosted a delegation of Chinese tertiary educators, who shared their ideas and participated in professional development.

The recent introduction of the 180-Masters qualification is another initiative designed to establish Waikato as a leading provider of education, nationally and internationally.

Continued from previous page >>

The WSA gala in Sri Lanka will serve as a global hub for the world's best e-content with workshops, renowned speakers and podium discussions.

The SLH promotes student interest and engagement in science by providing contemporary, contextualised resources for school teachers from Years 2–10. SLH showcases science using multimedia and demonstrates the relevance of scientific research to our everyday lives. The website provides a link between science research organisations and science teachers fulfilling an identified need in science education. The Learning Hubs are a national project funded by the Ministry of Business, Innovation and Employment and managed by the University of Waikato. For more information, visit: <http://www.wsis-award.org/winners/e-learning-and-education>.



## From student to staff member

Hongwei Di describes her Waikato study experience as both an academic and romantic journey.

Hongwei was part of a group of 27 educators from the Hebei province who completed their Masters in Education at Waikato in 2004. It was at Waikato,

and amongst this group that she met and married her husband Leo. The couple now have two boys.

Hongwei, who was a primary school teacher in China, really enjoyed her Waikato study experience as it enabled her to advance her understanding of educational theories and pedagogies. After completing her MEd she returned to Waikato to complete her Graduate Diploma of Teaching in Early Childhood Education.

It was while she was completing her GradDipT practicum that another opportunity arose. At the time, Hongwei's lecturer Rosina Merry was considering a visit to China to meet with other early childhood educators. Hongwei volunteered her services as a translator. In April this



Shijiazhuang Kindergarten staff, Hongwei Di & Rosina Merry (middle) & students.

year Rosina, Hongwei and the Faculty's former International Strategic Development Manager Peter Letterney visited China (see above). Hebei Normal University hosted the trio and arranged their visits to several early childhood centres. Hongwei adds the experience provided an opportunity to share knowledge.

When Peter Letterney, returned home to America his position became vacant. Hongwei applied and was successful. In her current role as the Faculty of Education's International Development Coordinator, Hongwei ensures the Faculty's international collaborations and memorandums of understanding are maintained. Her role is to work alongside the institutions to ensure plans are carried out and connections remain.

As part of her current role Hongwei organises delegation visits. For example in July this year, she was instrumental in hosting tertiary educators from China's Zhejiang University City College (see article below).

Hongwei says it is vital for universities to establish international connections. She adds educational relationships are important avenues for sharing ideas, knowledge and research.

As for her own educational experience, Hongwei has now established strong connections with Waikato University. She jokes one day her children may also join her and her husband as Waikato graduates.

## Faculty of Education hosts Chinese tertiary educators

A group of tertiary educators from Zhejiang University City College (ZUCC) in China spent two weeks in July experiencing life as a Waikato student.

While on campus the educators observed lectures and met with Waikato staff. They

also completed workshops that explored English language teaching, teaching pedagogy, methodology, assessment and curriculum design.

The University of Waikato has a memorandum of understanding with ZUCC University.

Both parties see the recent experience as an opportunity to strengthen and develop their relationship and consider future initiatives.

The recently established Institute of Professional Learning (based in the Faculty of Education) hosted the Chinese visitors.





# New Emeritus Professors for Faculty



*Professors Sue Middleton and Clive McGee are the Faculty's newest Emeritus Professors. An Emeritus Professor is a title bestowed on researchers who have made significant contributions to research and education nationally and internationally.*

**SUE MIDDLETON'S** university career spanned nearly 33 years. Her pioneering work on women's role in education has influenced scholars, students and teachers thinking nationally and internationally. She has published, spoken and taught extensively on the topic. For example, she paved the way in the eighties with the introduction of the paper Women and Education. In the nineties she initiated the paper Education and Sexuality. These courses were the first of their kind in a NZ university.

Sue's book titled; Women and Education in Aotearoa, and many of her other publications are considered classics, says Faculty colleague Logan Moss. "The role of women in schools and in education more broadly is now viewed very differently from when Professor Middleton first joined this University in 1980. Her research, teaching and supervision have, in no small part, been a major factor in bringing about that change."

The use of life history methodologies in educational research is another area of expertise where Sue has been instrumental. She has taught on the subject at graduate level and has spoken about it on numerous occasions

in New Zealand and overseas. She has supervised thesis students and helped initiate and develop the Doctor of Education. At undergraduate level she was a lecturer in the Faculty's Department of Policy, Cultural and Social Studies in Education.

Outside of the university Sue has been an active member of diverse professional associations and has been on the editorial board for a variety of international journals. She has received numerous awards, including a Fulbright Senior Scholarship, visiting Fellowships at the Institute of Education (London) and the McKenzie Award for sustained contribution to educational research in New Zealand.

**CLIVE MCGEE** is a distinguished academic and teacher. He is currently a Research Professor in the Wilf Malcolm Institute of Educational Research. He was the Foundation Director of the Centre for Teacher Education and Foundation Director of the Wilf Malcolm Institute of Educational Research within the University of Waikato.

Clive specialises in curriculum theory, design and development, curriculum, teaching and learning, and education in the social sciences. He has had extensive research activity over many years related to these areas and teacher education. He has directed many research projects. Large projects include a state of the art literature review on curriculum, learning and teaching; a longitudinal research project, the Curriculum Stocktake: National School Sampling study on New Zealand teachers' experiences in curriculum implementation; teachers' laptops usage and impacts. In 2005, he received the NZ Association for Research in Education McKenzie Award for sustained excellence in educational research.

In addition to his tertiary teaching, Clive has supervised a significant number of PhD students in the fields of curriculum, teaching, learning and teacher education. Furthermore, he has a long involvement in national and international curriculum development and policy in social science curriculum. He has over 250 publications and was the foundation editor of the Waikato Journal of Education and editor of the Social Studies Observer.

## What makes a good leader?

Nelson Mandela, Martin Luther King and Ghandi – we know the names, but do we know what makes them, and people like them, good leaders? Such a question was the focus of Education Professor Chris Branson's recent Inaugural Professorial Lecture titled: Leadership for the Future: Has leadership theory lost its way?

Chris lectures in educational leadership and is interested in the theoretical and practical implications required of good leaders. He describes three types of leaders, transactional, transformational and, a term he has coined, 'transrelational'.

Transactional leaders typify those common during the World War era; the war hero, the army general, the expert. Churchill, who was directive and authoritative in his approach, is an example, says Chris. The transformational leaders are the Ghandi's of the world, who care and lead people to create change and build capacity. "The transrelational leader is someone who encourages understanding and empathy amongst others. These leaders create opportunities for people to work together harmoniously and encourage and celebrate people's differences." He says this style of leadership aims to create a society that is socially just and inclusive.



Chris' interest in leadership styles spans several years. For his PhD the former secondary school teacher and principal examined how the values of school principals influence their decision-making. His recent research interest stems from his contempt at the poor leadership that resulted in the global financial crisis and the demise of several European countries. He says these over-paid leaders acted out of self-interest and were not made accountable for their actions. "Society influences our leadership and our leadership influences society," says Chris. He says dialogue is needed to ensure today's leaders embrace a style reflective of current social changes – a leadership approach that is with the people and for the people.



From left: Nadine Ballam, Vanessa Paki, Dr Sally Peters and Dr Elmarie Kotze.

## International collaborations

*Faculty of Education academics recently gained Royal Society funding for a four-year international research staff exchange scheme (IRSES) project that examines educational transitions.*

The Pedagogies of Educational Transitions (POET) project provides a platform for the sharing of research expertise between researchers from University of Waikato, Mälardalen University, Scotland's University of Strathclyde, the University of Iceland and Australia's Charles Sturt University.

Associate Professor Sally Peters, who is internationally recognised for her research regarding educational transitions, leads the Waikato team.

Dr Peters, who is also the Associate Director of the Faculty of Education's Early Years Research Centre, is pleased to be a part of POET. She says researchers in each country are working on existing research programmes and the exchanges provide opportunities to extend and share skills, expertise and experiences with others, "generating outcomes greater than the sum of the parts".

Dr Peters' research focus is the transition from early childhood to primary school. "But this international project is much bigger than that covering transitions in and across a range of education settings for children, for adults beginning tertiary education and masters students taking the next step into professional counselling." Dr Peters anticipates this project will be the start of more fruitful international collaborations.

Each university's team includes experienced and early stage researchers and there is a focus on building research expertise for the future. Dr Peter's brought in Vanessa Paki as co-leader of the University of Waikato project because of her cultural knowledge and expertise. "Our work at Waikato within the wider POET project includes building research capability that can address research questions of particular interest to Māori communities." Sally and Vanessa were part of a POET exchange to Mälardalen University in August. Other members of the Waikato POET team who went to Sweden are Nadine Ballam and Dr Elmarie Kótze. In April next year, the University of Waikato will host researchers from the four other institutions and there will be a number of POET events that researchers, teachers and graduate students can participate in.



## Fellowship for Principal

*Watson Ohia, Principal of Te Wharekura o Ngā Taiātea, is the 2013 recipient of the Fred Kana Fellowship.*

This fellowship which was first awarded in 2012, honours the memory of Fred Kana, who was a Senior Lecturer, Kaiurangi and matua, at the Faculty of Education.

The Fred Kana Fellowship gives a successful leader involved in Māori medium education, time to reflect and research on their teaching and learning experiences. This award offers the recipient the opportunity to pursue an area of study to which they are passionate about and will have an impact on improving the learning achievement for Māori and for all students.

## Passion for physical education recognised

*Sport and Leisure Studies staff and alumni were amongst recipients nationally acknowledged for their contribution to physical education.*

The recent Physical Education NZ (PENZ) National Conference presented awards to Sport and Leisure Studies lecturer Lorna Gillespie and Waikato alumni Shane Keown, and Joel Devcich.

Lorna was the joint recipient of the *Te Iho-Takaro Ringawera Award*. At the ceremony, Lorna was recognised for her 'golden' contribution to physical education, which includes more than 30 years of dedication. Amongst her roles, she has been a teacher, a lecturer, a subject facilitator and a project manager for a variety of agencies such as NZQA, the Ministry of Education, SPARC and PENZ to name but a few.

Shane and Joel, who are teachers at Hamilton's Knighton Normal School, received the *Outstanding New Professional Award*. This award recognises new teachers who have made a significant contribution to the physical education of NZ children and young people. The teachers were described as reflective practitioners who offer inclusive and quality learning experiences for their students. Within the school setting the pair have also lead Health and Physical Education professional learning.

## TAURANGA T SEMESTER

For the first time the Faculty of Education is offering a T Semester paper in Tauranga.

### SPLS213 Principles and Practices for Leading Outdoors

This 20-point paper is suitable for students interested in developing their instructional skills and teaching strategies when working with groups or in a range of outdoor activities and environments.

This paper is relevant to BTchg students seeking a relevant, curriculum related option paper, psychology, social work and business students looking to extend their leadership and communication skills in group situations or a student from any university needing a second year paper as part of their degree. This paper is in T Semester (4 Nov-13 Dec 2013). It is taught in intensive face-to-face block sessions in Tauranga from 12-15 and 18-22 November. Further study is required outside of these dates.

For more information contact:

Marg Cosgriff (cosgriff@waikato.ac.nz).

Enrol online at: [www.waikato.ac.nz/study/enrol](http://www.waikato.ac.nz/study/enrol)

## Transforming Disciplines: Emergent learning and threshold concepts

18-19 NOVEMBER 2013, UNIVERSITY OF WAIKATO

This conference will bring together researchers and practitioners to share ideas about teaching and learning. Registration for this boutique conference closes 15 October. For more information and registration visit:

<https://education.waikato.ac.nz/ELTC/>



# Adult Learners success

Faculty of Education adult students Raina Clary, Natalie Hemming, Shirley Robertson and Nikki Keys received University of Waikato Vice-Chancellor's Adult Learners Awards.

The awards are intended to encourage more adults to access learning opportunities and to celebrate the efforts, academic and personal achievements, and contributions of adult learners.



**Raina Clary** is an A average BTchg (Kākano Rua) student despite a busy schedule. The mother of seven also takes night classes in te reo, coaches soccer and is a singing teacher. Amongst her peers she is a role-model and often offers support and encouragement.



**Natalie Hemming** is an A average student on the Bachelor of Teaching programme. She was nominated for the award due to her excellent results and willingness to help and mentor others. On campus she has campaigned for Marriage Equality and on social justice issues.

**Shirley Robertson** (below left) and **Nikki Keys** (below right) are students at the Tauranga campus. Nikki is an MEd student, Welcome Bay Primary School's deputy principal and is a grandmother three times over. Her nominee describes her as an innovative leader and mentor of teachers at her school and student teachers. Shirley, a third year BTchg (Primary) student was acknowledged for the support and contribution she makes to other students on the Tauranga campus and her academic success.



National hockey winners: (From left) Kate Kernaghan, Kim Tanner, Rachael Lecky, Imogen Neil, Kayla Wilson.

## Student win at hockey champs

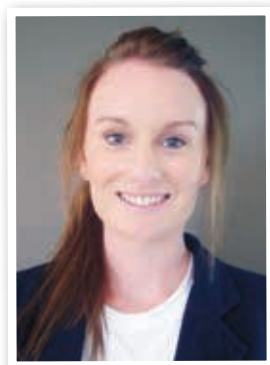
Sport and Leisure Studies students Kayla Wilson, Kate Kernaghan and Rachael Lecky along with other University of Waikato students Imogen Neil, Kim Tanner and Brooke Neal, secured a place in history after claiming a maiden National Hockey League title in August with the Midlands women's hockey team. Kate, Kim, Kayla and Brooke are also a part of the Hillary Scholarship Programme which has supported them in achieving their goals.

## New jobs for SPLS graduates

Congratulations to our sport and leisure studies graduates who have secured employment after graduating.

Bianca Nichols completed a practicum with the Chiefs and is now working for them as a customer service representative. Jason Boobyer and Aroha Crombie are now working for Kiwi Sport Waikato. Jason promotes golf to school aged children and Aroha promotes netball to school students in the Waikato. Hayley Paton is a personal trainer at Cambridge's Anytime Fitness. Kelsey Lynam coordinates youth programmes for YWCA and Jake Mills helps people with disabilities integrate into society through sport and recreation. Read their stories at [www.waikato.ac.nz/education](http://www.waikato.ac.nz/education)

# Women's graduate award to help PhD study



Sport and Leisure Studies PhD candidate **Amy Marfell** is the recipient of a Waikato Graduate Women's Award for doctoral study. This is a three-year scholarship. She was also awarded a Claude McCarthy Fellowship. The fellowship will enable her to attend the 2014 North American Sociology of Sport conference in Portland next November.

Amy has recently completed her first year of study towards her PhD, which focuses on women's experiences of sporting pleasure, with a particular emphasis on the positive netball experiences of New Zealand women. Her research incorporates an array of research methods, which involve her reflecting on her own netball participation, conducting participant observations, and interviewing a selection

of New Zealand women netballers of diverse ages, races/ethnicities, abilities and backgrounds. "I am interested in capturing women's multiple and diverse physical, emotional, sensual and social sporting pleasures" says Amy.

As a keen netballer, she adds that despite the popularity of netball in this country, surprisingly, there is very little research dedicated to exploring the value of netball in the lives of New Zealand women. Similarly, rarely do researchers prioritize women's movement pleasures.

Amy's research aims to demonstrate the diversity of women's sporting pleasures and to situate these within dominant ideas surrounding gender, femininity, sport, health and fitness. In so doing, she considers the ways some women accept

and/or challenge the social limitations placed on their moving bodies in sport - specifically netball.

Ultimately, Amy sees this project as "an opportunity to generate some new and interesting knowledge in the field of sport sociology" whilst "bringing forth women's 'voices' and their 'stories' of sporting pleasure." Amy is undertaking this research with the guidance of her supervisors Professor Robyn Longhurst and Dr Holly Thorpe.

Amy says the graduate award, which is worth \$2,500 per year for three years, will provide valuable financial assistance with her research, whilst the fellowship will offer her the valuable opportunity of presenting at a prestigious international sociology conference.



CELTA teacher Paul Barlow (middle back) with students.

## Cambridge Certificate in English Language Teaching to Adults (CELTA)

Gain a professional teaching qualification and travel the world! The Cambridge CELTA offers one month of highly intensive training in essential English Language teaching skills. CELTA is challenging, highly effective and accepted worldwide.

Paul Barlow graduated from the Waikato CELTA held in May 2013. He found the CELTA course challenging, practical and rewarding. Since graduating Paul has taught at Waikato and is now acquiring his first private students.

The next CELTA course is offered Monday to Friday (9am-5pm) from 2 – 29 November 2013. Classes are held at Waikato Pathways College, University of Waikato. The cost is \$3,070. For further information call Meg Shovelton on (07) 838 4371. Applications are available from: <http://www.waikato.ac.nz/pathways/community/professional/celta.shtml>

## New Master of Teaching and Learning

This intensive one-year programme leads to provisional registration as a New Zealand primary school or secondary school teacher.

This 180-point Masters programme will develop students critical understanding of research based pedagogical approaches, learning theory and content knowledge to effectively teach diverse learners in New Zealand schools. Practical classroom experiences are a compulsory component of this programme.

Applications for 2014 close December 1, 2013. All applicants are required to undergo an interview and selection process. Applications are invited from degree graduates with a B+ average. This programme is not for qualified teachers.

**Programme dates:** January 6 – December 19, 2014

**Location:** Hamilton campus (with some online study)

*Note: This programme is administered through the Faculty's Centre for Teacher Education. Please contact the Centre for further details.*

## School's in for Summer

Want to speed up your study, catch up or try something new? The University of Waikato offers two summer school semesters: T Semester (4 November - 13 December 2013) and S Semester (6 January - 21 February 2014). Applications for Summer School (S) are now open.

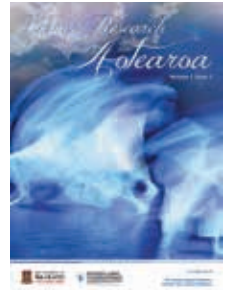
In addition to completing a directed study or the popular research methods paper, a variety of Faculty of Education Summer School papers are available. Summer School papers cover areas such as: photography and music making for educational contexts, the teaching-and learning process, the teacher as writer, ageing, motivation and behaviour difficulties strategies, curriculum policy and assessment, drama, intelligence, creativity and the development of talent, environmental and sustainability education and counselling contexts.

## New Publication

### Dance Research Aotearoa

Editor: Karen Barbour

This is an annual publication that presents peer-reviewed scholarly dance research in an internationally accessible online journal. Dance Research Aotearoa has a particular focus on dance in, and by dance researchers working in, Aotearoa and the South Pacific.



### Are you seeking educational resources?

The Learning4 specialist education stores has an extensive range of educational resources, professional readings and consumables. There are three physical stores situated in Gisborne, Hamilton and Tauranga or buy online at: [www.educationresources.co.nz](http://www.educationresources.co.nz)



## COUNSELLOR EDUCATION AT WAIKATO

### Counsellor Education Community Day

To hear more about Counsellor Education at Waikato come along to our community day. Date: 12 November 2013 (all day). Contact Lauren: [laurenk@waikato.ac.nz](mailto:laurenk@waikato.ac.nz)

### HDCO551 Whānau and Narrative Practice

The emphasis of this new postgraduate paper is growing matauranga Māori for and in social service practice with whānau. The paper explores narrative therapy as mana-enhancing practice. Contact Elmarie: [elmariek@waikato.ac.nz](mailto:elmariek@waikato.ac.nz). (Teaching staff below).



## Contact us

### The University of Waikato

Private Bag 3105  
Hamilton 3240  
New Zealand

### Faculty of Education

Phone: +64 7 838 4500  
Fax: +64 7 838 4555  
Email: [teach@waikato.ac.nz](mailto:teach@waikato.ac.nz)  
[www.waikato.ac.nz/education](http://www.waikato.ac.nz/education)

*Congratulations to all new graduates.  
We wish you well in the future.*



## Upcoming events [www.waikato.ac.nz/education](http://www.waikato.ac.nz/education)

Teacher Ed applications close: December 1, 2013  
T Semester starts: 4 November  
S Semester starts: 6 January 2014

Limits and Perspectives of Mikhail Bakhtin Conference & Dialogic Pedagogy Institute: 15-19 January 2014.  
Register online at: <http://mikhailbakhtin4.blogspot.co.nz>